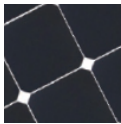




**Semi-Flexible & 1/16" thick: perfect for canvas installation**

**Available in a variety sizes, shapes & efficiencies**

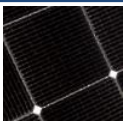
**Highest Power, Lightest Weight**



**Highest Output SP Series using SunPower cells with up to 23% cell efficiency- highest efficiency semi-flexible panels available**

Model #	SP52L	SP52Q	SP65	SP78	SP104	SP118L	SP118Q	SP130	SP144
Length	44" /1109mm	24" /601mm	29" /728mm	33.7"/855mm	44"/1109mm	49"/1236mm	33.7"/855mm	54"/1363mm	59"/1490mm
Width	11.7"/292mm	21.7"/546mm	21.7"/546mm	21.7"/546mm	21.7"/546mm	21.7"/546mm	31.5"/800mm	21.7"/546mm	21.7"/546mm
Weight	1.8 lbs.	1.8 lbs.	2 lbs.	2.3 lbs.	3.1 lbs.	3.5lbs.	3.5lbs.	3.7 lbs.	4.2 lbs.
Power	52 W	52 W	65 W	78W	104 W	118W	118W	130 W	144 W
Panel V (Voc)	10.9V	10.9V	13.4V	16.4V	21.8V	24.5V	24.5V	27.3V	30.0V
Panel V (Vmp)	9.1V	9.1V	11.2V	13.7V	18.2V	20.7	20.7	22.8V	25.3V
Max I to 12V battery	4.3A	4.3A	5.3A	6.5A	8.7A	9.8A	9.8A	10.8A	12A
Est. Sunny Day Yield	13-20Ahs/day	13-20Ahs/day	16-24Ahs/day	20-30Ahs/day	26-40Ahs/day	30-45Ahs/day	30-45Ahs/day	33-50Ahs/day	36-55Ahs/day
Price	\$529	\$529	\$649	\$789	\$1049	\$1189	\$1189	\$1299	\$1449

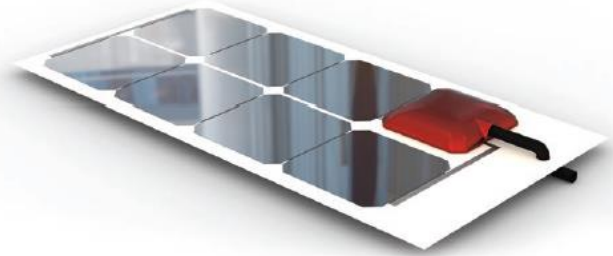
\*\*\*\*\* The SP series is available in custom sizes for \$11/watt \*\*\*\*\*



**Super Rugged SR Series with new "Merlin" technology offers cell efficiency up to 21% with top durability in flexible solar panels**

Model#	SR 54	SR 62	SR 72L	SR 72Q	SR 108	SR 144	SR 160L	SR 160Q	SR216
Length	41"/1041mm	48"/1205mm	53.4"/1364mm	28.5"/728mm	41.2"/1046mm	54"/1364mm	60"/1523mm	41.2"/1046mm	53.7"/1364mm
Width	14.3"/365mm	14.3"/365mm	14.3"/365mm	26.9"/683mm	26.9"/683mm	26.9"/683mm	26.9"/683mm	39.2"/996mm	39.2"/996mm
Weight	2.2 lbs.	2.4 lbs.	2.6 lbs.	2.6 lbs.	3.7 lbs.	4.6 lbs.	5.3 lbs.	5.3 lbs.	6.6lbs.
Power	54 W	62 W	72W	72W	108W	144W	160W	160W	216W
Panel Voc	7.8V	8.9V	10.2V	10.2V	15.3V	20.4V	23V	23V	30.7V
Panel Vmp	6.3V	7.2V	8.4V	8.4V	12.6V	16.7V	18.6V	18.6V	25.1V
Max I to 12v battery	4.3A	5.2A	6A	6A	9A	12A	13.3A	13.3A	18A
Est. Sunny Day Yield	13-18Ahs/day	15-22Ahs/day	18-25Ahs/day	18-25Ahs/day	27-38Ahs/day	34-50Ahs/day	40-56Ahs/day	40-56Ahs/day	54-76Ahs/day
Price	\$399	\$489	\$579	\$579	\$819	\$1079	\$1199	\$1199	\$1499

\*\*\*\*\* The SR series is available in custom sizes for \$9/watt \*\*\*\*\*



## ALLinONE (All1)

- Available in select sizes of the SP & SR series.
- Constructed with a built-in 12V/24V waterproof charge controller for easy installation. (Wire directly to your battery)
- All models available w/ a Forex Plastic Backing & Grommets. Add 10% to price for Forex backing.

Model#	Size(in.)/Weight(lb)	Power	1-Stage Charge V	Max I @12V/24V	Price	Price w/Forex & Grommets
SP23All1	23.7"x 11.5" / 1.3 lbs	23W	13.8V/27.6V	2A/1A	\$269	\$295
SP47Q All1	23.7"x21.5" / 2 lbs	47W	13.8V/27.6V	4A/2A	\$519	\$570
SP47L All1	44" x 11.5" / 2lbs	47W	13.8V/27.6V	4A/2A	\$519	\$570
SP60 All1	28.7"x21.7" / 2.4lbs	60W	13.8V/27.6V	5A/2.5A	\$659	\$725
SP72 All1	33.7"x21.5" / 2.6lbs	72W	13.8V/27.6V	6A/3A	\$759	\$835
SR 68L All1	53.7"x14.4" / 2.9lbs	68W	13.8V/27.6V	5.6A/2.8A	\$579	\$637
SR 68Q All1	28.7"x26.9" / 2.9lbs	68W	13.8V/27.6V	5.6A/2.8A	\$579	\$637
SR 104 All1	41.2"x26.9" / 3.7lbs	104W	13.8V/27.6V	8.6A/4.3A	\$829	\$912

### Cable Connections

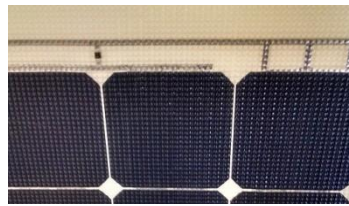


MC4 Quick Connects with junction box and 18" pigtails (Standard, comes with a blank MC4 set for wiring to controller)

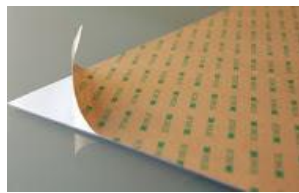


Rear Wires for wiring through hard mounting surface (special order)

### Panel Options

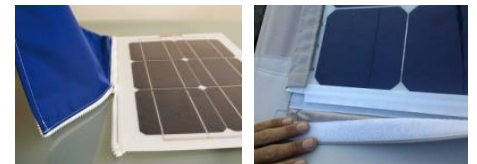


Panels are available with a slip-resistant textured surface (special order)



Back side adhesive for permanent mounting on hard surface (special order \$42)

### Installation Options



For Velcro, zipper or grommet installations, consult a canvas shop



Rigid plastic backing is available for installations over cross bars or uneven surfaces \$50 to \$100 depending on panel size



Ask about our lifeline installation options