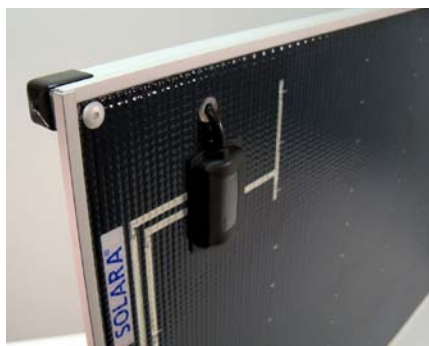


New Product!

Aluminum ***EZ Mount*** option for Solara Power M 115w and 140w panels



In response to high demand, Coastal Climate Control, Inc. introduces a strong, lightweight, anodized aluminum ***EZ Mount*** option for Solara Power M 115w, and 140w solar panels. The ***EZ Mount*** completely encloses the panel edges, protecting them and providing a stiffened structure on which to mount clamps, brackets, etc. The $\frac{3}{4}$ " U-channel

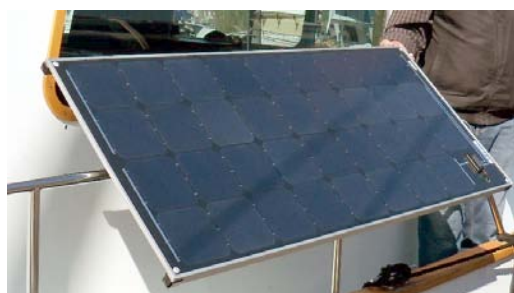


side rails are normally cut to the length of the panel, but can be left uncut at 6' on request. Two 1 $\frac{1}{2}$ " wide Cross-Beams are supplied but not secured so that the customer can mount the necessary hardware, if applicable, and then position and secure them in their desired locations. The ***EZ Mount*** adds only 4 to 5 lbs to the weight of a Solara Power M solar panel.

Davit/Frame Mount: The ***EZ Mount*** enables Solara Power M solar panels to be easily mounted onto davits, or on frames located above bimini's, canopies, radar arches, etc., either as a single panel or in multiples. The strong but lightweight $\frac{3}{4}$ " U-Channel Side Rails provide convenient mounting areas for brackets, clamps, etc.



Hand Rail Mount: When using the ***EZ Mount*** for mounting Solara Power M solar panels



on hand rails, the clamps can be mounted on the 1 $\frac{1}{2}$ " Cross-Beams either on the centre-line of the panel, or to one side.

Mounting the clamps to one side

results in almost all of the panel being outboard of the railing, but will require a prop (owner supplied) underneath for support.



Coastal Climate Control, Inc.

www.CoastalClimateControl.com - info@CoastalClimateControl.com
301-352-5738 - Annapolis MD USA