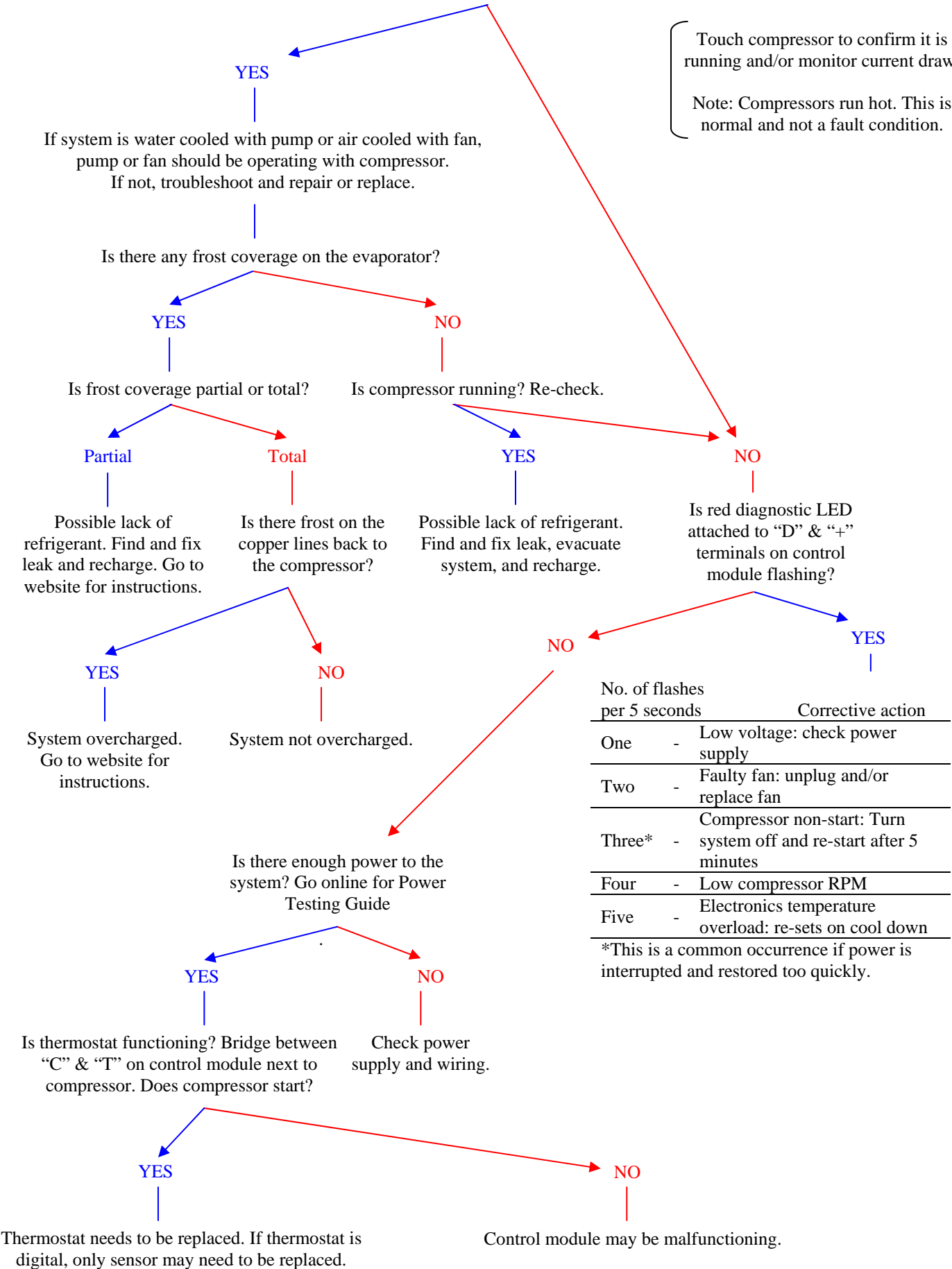


# Is the Compressor Running?

Touch compressor to confirm it is running and/or monitor current draw.  
Note: Compressors run hot. This is normal and not a fault condition.



No. of flashes per 5 seconds	Corrective action
One	- Low voltage: check power supply
Two	- Faulty fan: unplug and/or replace fan
Three*	- Compressor non-start: Turn system off and re-start after 5 minutes
Four	- Low compressor RPM
Five	- Electronics temperature overload: re-sets on cool down

\*This is a common occurrence if power is interrupted and restored too quickly.