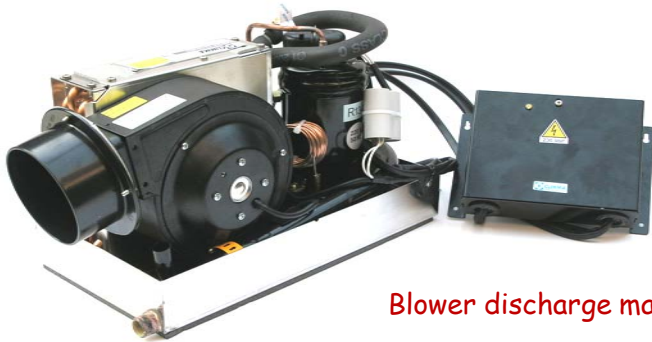


Compact 4.2 - with Vega MK III Control

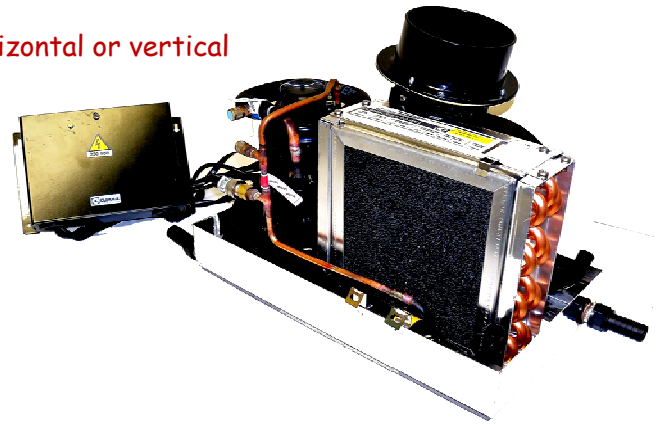
Cool Only & Reverse Cycle versions available



Blower discharge may be horizontal or vertical

12v DC Compatible!

Average 35 amps **total**, including pump, when operated from a nominal 12v power source through an inverter. Can be used overnight on batteries. Ideal for Cuddy Cabins; V-Berths. Also use as Dashboard Helm-Cooler; Face Freezer; etc.



- Versatile, powerful, and quiet 4,200 Btu high-efficiency marine air conditioner
- Manufactured by Europe's leader in marine air conditioning. An ISO 9000-2001 company
- Stainless steel base, pan and brackets for long life in the harsh marine environment
- Extra-deep condensate pan to minimize spillage, with twin scavenging condensate drains
- High efficiency Hitachi compressor for exceptionally low running and starting current
- Unique horizontal condenser with exceptional heat transfer characteristics
- Triple-pass tube-and-fin evaporator to ensure highest possible heat and moisture removal
- Quiet but powerful 110 CFM variable speed centrifugal blower for maximum cooling
- Right hand blower discharge. Can be changed from horizontal to vertical orientation
- Eight manual blower speeds plus Automatic, electronically controlled from Vega MK III
- Pre-charged with precise quantity of refrigerant. No special tools or expertise required
- Uses environmentally friendly and widely available refrigerant, R134a
- Multi-function, user friendly, Vega MK III digital control standard
- Auto, Dehumidify, and Defrost modes selectable on Vega MK III control
- Exceptionally low current draw - Can be powered by batteries through a 700w (min) inverter
- DC pump option available. Can be installed above waterline and share an existing intake
- Ducting and grille kits available
- Air intake filter removes easily and quickly for routine cleaning



Compact 4.2 - Technical Data

Installation Requirements

Supply and Return Air Grilles

Discharge grille(s) - Min 15 sq inch
Return air grille - Min 50 sq inch

Ducting

4" diameter blower discharge

Water Pump

Minimum 1.5 GPM
Recommended - Flo-Jet 12v

Water Hose

Intake and discharge - 5/8" diameter
Condensate - 5/8" diameter

Circuit Breaker - 115v

10 amp magnetic/thermal breaker

Power Supply Wire - 115v

Minimum 16 AWG



Capacity

Nominal capacity @ABYC standard conditions
Cooling capability - below decks

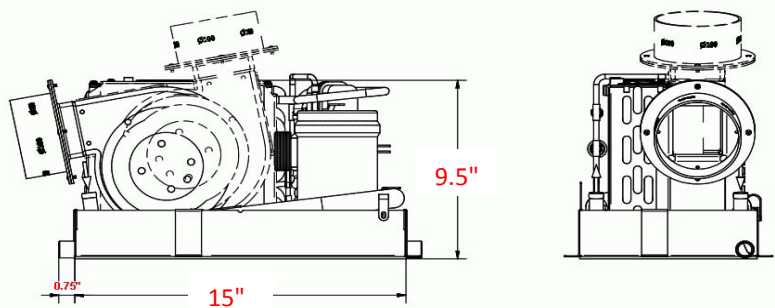
4,200 Btu/hr
300 cu ft free air space - Cuddy cabin or v-berth

Dimensions

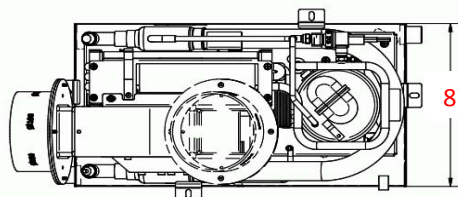
Compact 4.2 15" w x 8"d x 9.5"h
Vega MK III 5" w x 2.5" h

Other Data

Power Supply 115v, 60 Hz, 3.8 amp
Power draw average 400 Watts
Inverter reqd. Min 700 watt
(Pure sine wave)
Weight 26 pounds
Part Number MC42KCOI



Blower can be positioned vertical or horizontal



Coastal Climate Control

4831 Telsa Dr, Suite H
Bowie MD 20715
www.CoastalCoolAids.com
info@CoastalClimateControl.com

